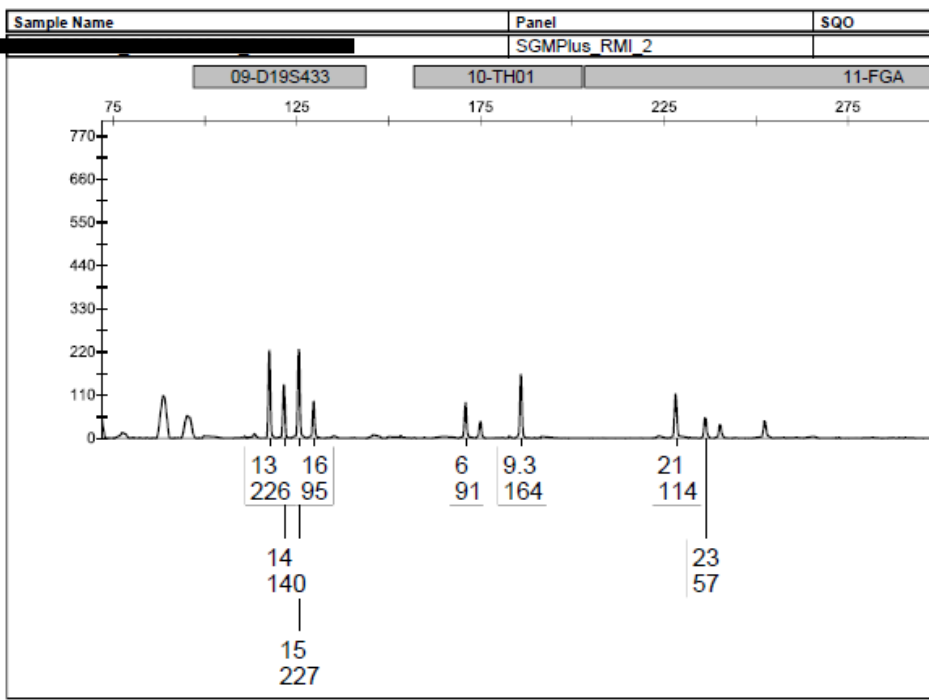
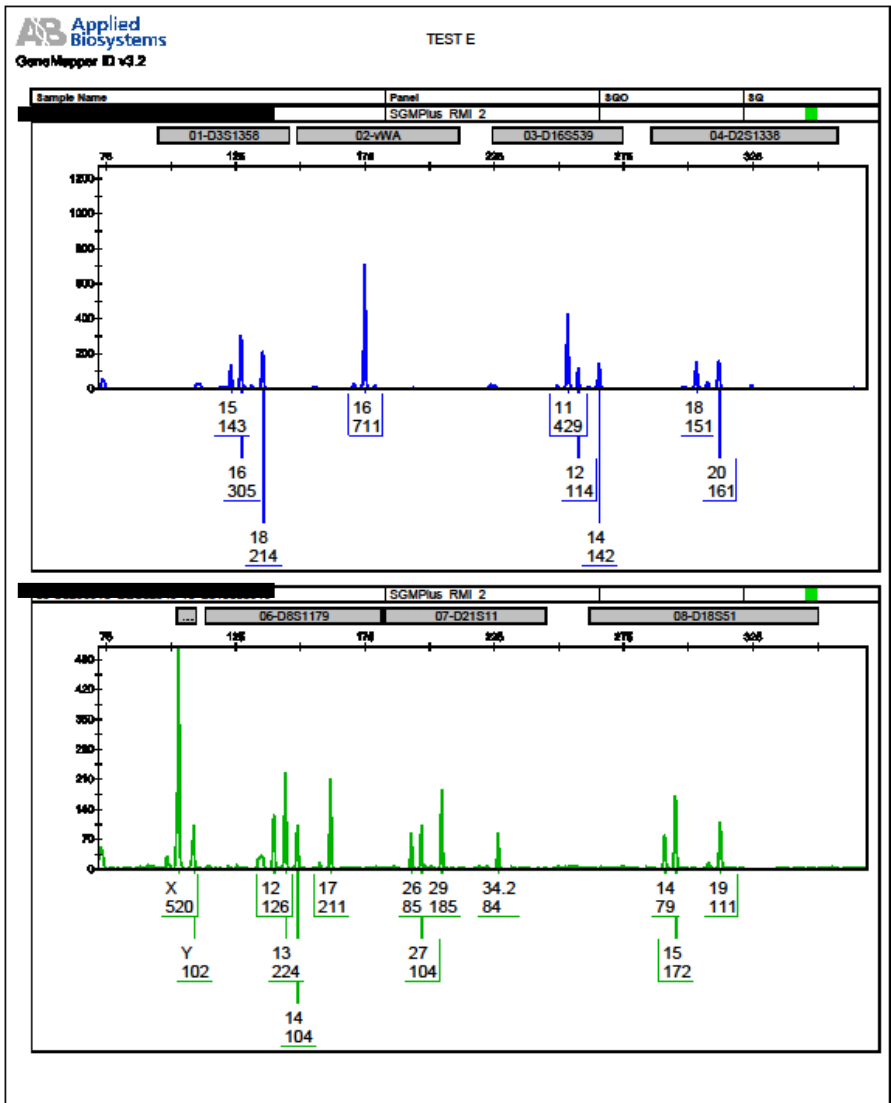


Case 0

Case circumstances

- Murder of woman by stabbing.
- The knife was recovered at the crime-scene. It is identified as the murder weapon and a profile was obtained from the handle.
- We condition the results under Hp on the suspect and victim.
- The suspect's profile is minor, and there is allele dropout, so it is incomplete.

Case 0

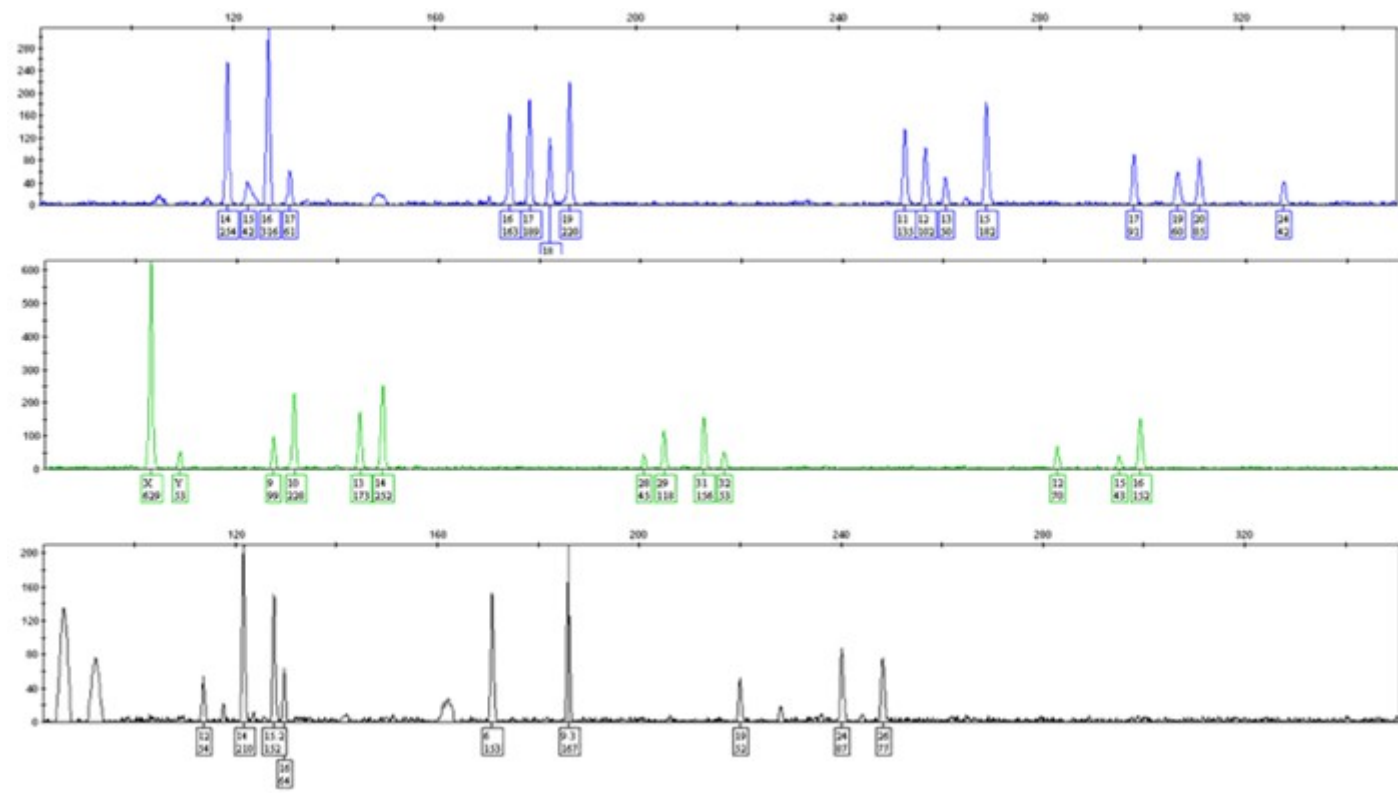


Case 1

Case circumstances

- The crime-stain is from an epithelial swab taken from the female victim.
- There are two suspects accused of sexual assault, S1 and S2 respectively; both deny the offense.
- This epg is classified as a low template of three or more individuals. Since there are multiple alleles per locus that fall within the criterion of the low template zone (between the LDT and the stochastic threshold (T)) – we expect dropout may occur, but the profiles appear to be well represented.

Case 1

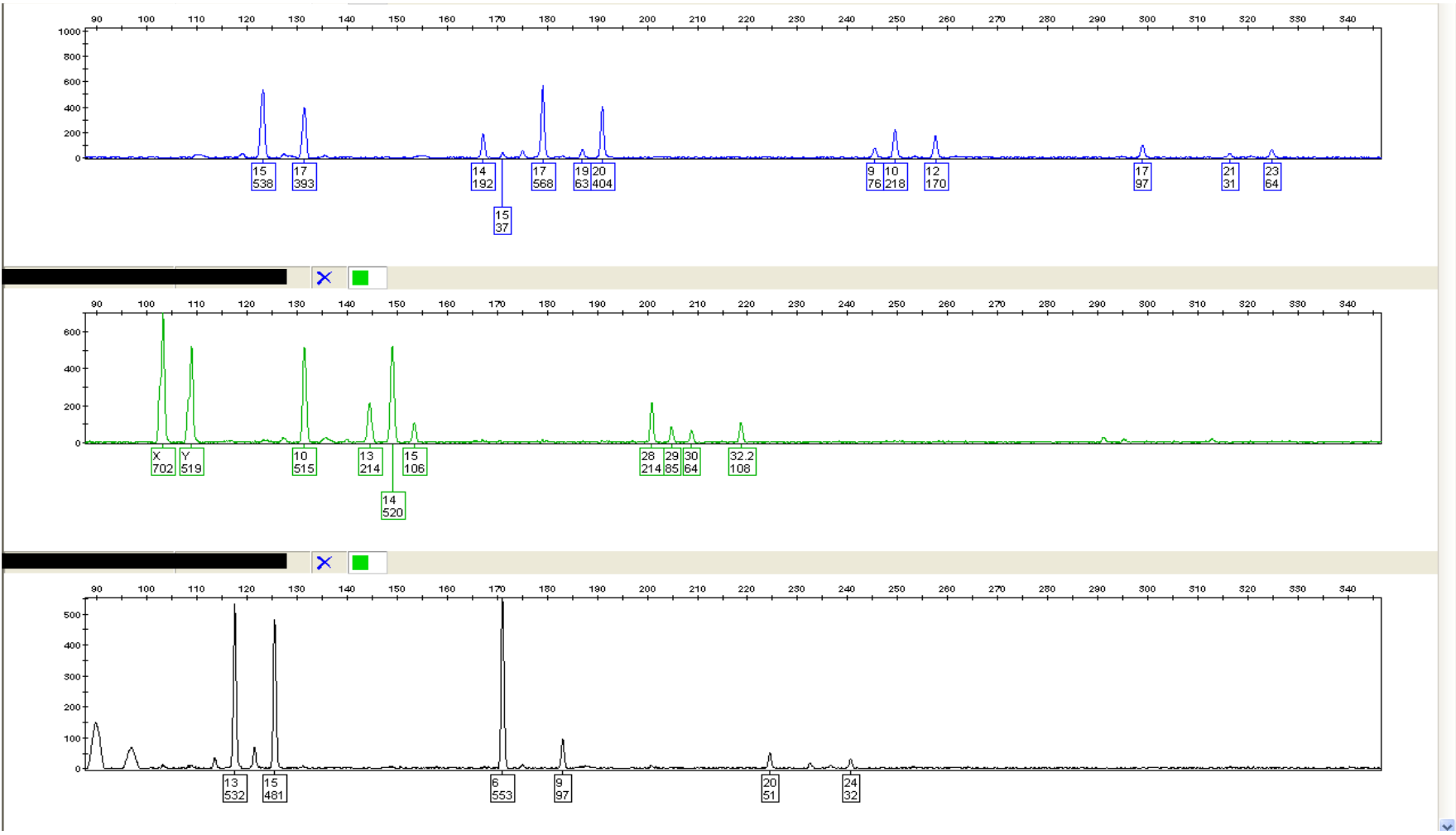


Case 2

Case circumstances

- Murder case with a male victim killed in a fight.
- There are five suspects that are apprehended by police and DNA profiled.
- Is there evidence of that any of the suspects' DNA is at the crime-scene?

Case 2



Case 3

Case circumstances

- A victim is stabbed. A knife is recovered away from the crime scene in the suspects flat. The suspect denies involvement.
- There is a witness (S1) present in the flat at the time of the incident.
- The knife is DNA profiled. There is insufficient evidence to assign a body fluid to the DNA profile (no blood is present) hence the contact traces are assumed epithelial cells. Inspection of the epg indicates a minimum of three-person mixture.

Case 3

