



**Programme. Teaching schedule
with links to lecture notes, exercises etc**

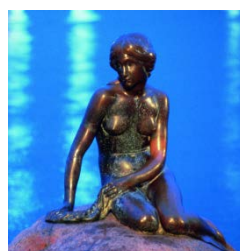
**Statistical methods in forensic genetics
Train the trainers Workshop
Part II**

May 20-23 2014

Copenhagen, Denmark

Final version May 27, 2014, almost final

thore.egeland@nmbu.no





Practical Information

There is a separate document giving practical information. Please send inquiries by e-mail to Niels Morling – niels.morling@sund.ku.dk

Preparations for the course

The participants are encouraged to present relevant experience and some have already signed up as indicated in the program for Day 1 below: There is room for more presentations on Day 4, please send email to thore.egeland@nmbu.no if you would like to present (5-15 min)! The software from the previous course has been updated and there are also new programs available. Participants must bring a reasonably fast laptop with the below applications installed. Assistance for installation will be provided at the workshop, if needed. Note that installation is typically only possible if you are administrator on your laptop. An email address is supplied in case you have questions:

- R (<http://cran.r-project.org/>), R-package forensim (<http://forensim.r-forge.r-project.org/>) , R-package strvalidator (<http://cran.r-project.org/web/packages/strvalidator/>)
 - Contact Oskar.Hansson@fhi.no
- Familias 3.0 <http://www.familias.no/>, FamLinkX <http://famlink.se>
 - Contact daniel.l.kling@gmail.com
- R-packages disclap (<http://cran.r-project.org/web/packages/disclap/>) and disclapmix (<http://cran.r-project.org/web/packages/disclapmix/>) .
 - Contact mikl@math.aau.dk (Mikkel Meyer Andersen)
- Some additional, but not as essential R-packages, include: maps, mapplots, RColorBrewer and paramlink

Literature

Tutorials and papers can be found starting from above links. Additional course material is available from links below.



Programme

Some parallel sessions, tutorials may be arranged on demand for the benefit of participants who did not attend the previous course or may have special interests. There will be hands on exercises for most sessions.

Day 1: Tuesday May 20, 2014

Until 14:00h: arrival of participants

14:00-15:30 Repetition (Thore Egeland)

- Practicalities. Outline of course. (Niels/Thore)
- [MixturesRepetitionThore2014.pdf](#)
 - LR. Drop-out, drop-in
 - [LRmixTK \(Haned\)](#)
 - Haned, Gill, Slooten , FSI: Genetics 2012
- [RelationshipsRepetitionThore2014.pdf](#)
 - Paternity case. Complications. [Familias 3 manual \(Kling et al., 2014\)](#)
- [Day1Exercises.pdf](#)
 - Mixture exercises: no further documents needed
 - Familias 3. [Familias 3 exercise with solutions](#)
 - [Input files](#) (EXS1.fam and EXS9.fam)

15:45-17:00 Participant presentations. Discussion

- Federicia Alessandrini. [Experience from Ancona course](#)
- Carlos Baeza Richer. [Experience from Madrid Course](#)
- Bram Bekaert. [Complex mixture interpretation](#)



Day 2: Wednesday May 21, 2014

09:00-10:30 (Daniel Kling, Thore Egeland, participants)

- [X-chromosome markers. FamLinkX](#)

10:45-12:30 (Mikkel Meyer Andersen)

- [Haplotype evidence Tutorial](#)
- Demo of R-packages disclap and disclapmix. [R-code and data](#)

13:30-17:00 (Daniel Kling, Thore Egeland, participants)

- [Familias 3. New developments](#)
 - Drop-out with kinship applications
 - DVI/Blind search
 - Simulation
- Exercises
 - [Familias 3. Input files Solutions](#)
 - [FamLink, FamLinkX. Input files Solutions](#)
- Cases (participants)

Day 3: Thursday May 22, 2014

09:00-12:30 LRmix (Oskar Hansson)

- [LRmix update](#)
- [Details on estimating drop-out probabilities](#)
- Practical cases including [Colloborative exercise](#) (Prieto et al, FSI: Genetics, 2014)
 - [Answers](#)
- Further cases, preferably from participants, alternatively more exercises



13:30-15:30 (Thore Egeland, Oskar Hansson)

- [Continuous models](#) (Thore)
- [Some R tips \(one page\)](#). Other R software
- [video](#) demonstrating mastermix with information on installation (Øivind Bleka)
 - Previous exercises continue if time permits

15:45-17:00 [STR validator update](#) (Oskar Hansson)

- [Guided Exercise Contamination](#)
- [Guided Exercise Dropout](#)
- Katja Drobnic. LRmixTK examples
- Carlos Baeza Richer. Mixtures with relatives - example

Day 4: Friday, May 23, 2014

09:00-12:00 Participant presentations.

- Dorothy Ramsbottom. [NGMSE the Irish Experience](#)
- Marios Cariolou

Demonstration of Java version of LRmix (Oskar)

[Discussion – topics raised](#) (Thore)

Cases and exercises (participants)

- [Familiasvideos](#)
- [Collected talks, pdf or pptx](#) (13 MB)

Breaks

Lunch: 12:30 – 13:30.

Coffe/tea breaks: 10:30-10:45 and 15:30-15:45.